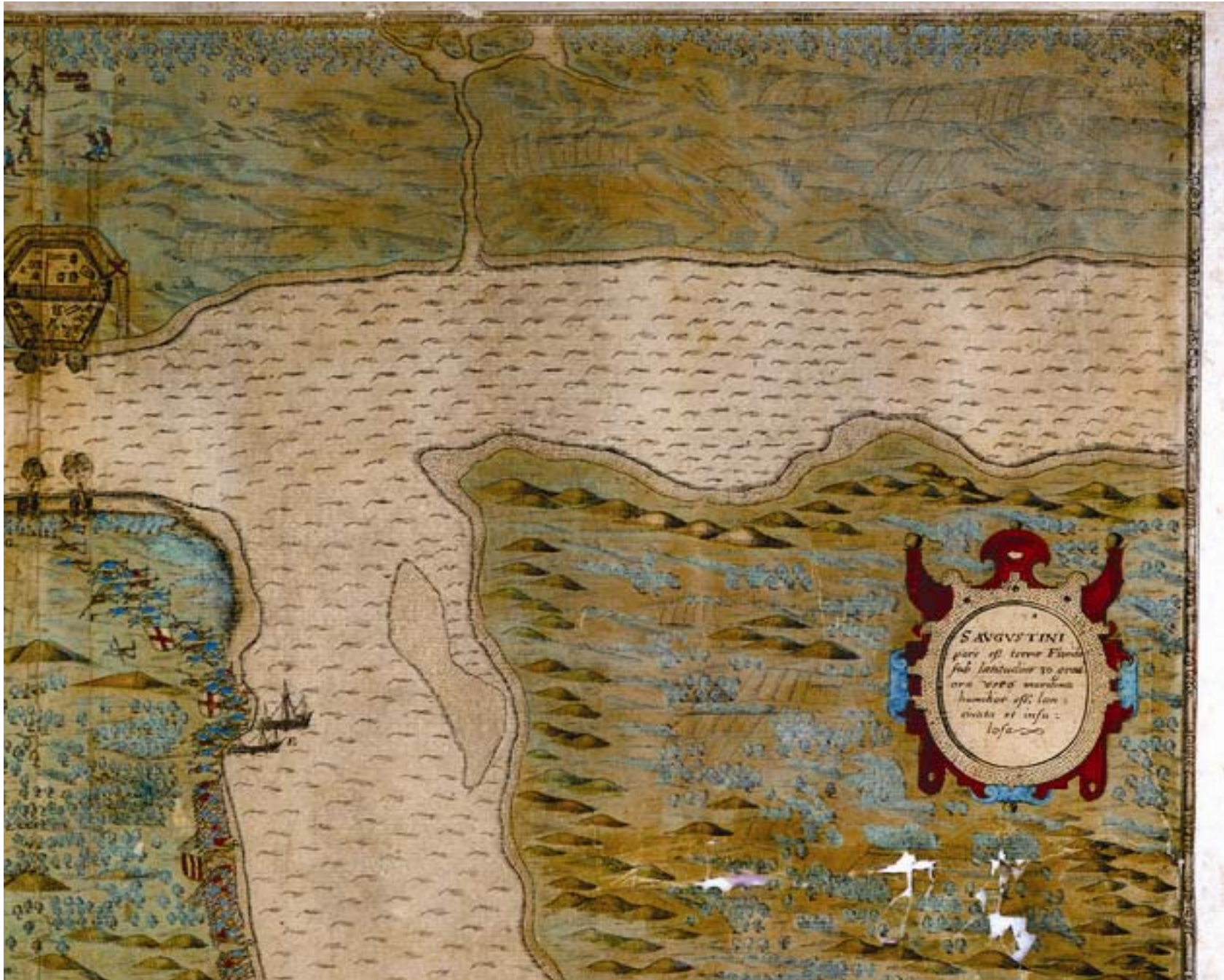


www.loc.gov/item/2021668422/

Library of Congress

www.loc.gov/teachers



www.loc.gov/item/2021668422/

Library of Congress

www.loc.gov/teachers



Augustine.

lodge himself in some trenches close by
 being the approach abandoned the place
 wards had lying hard by their forte in
 des had made of the bodies of Cedar
 portene great and long peeces of as
 to the sand bancke played vpon vs, the
 snos which afterward we burned.

- K** Our Pinnaces as they rowed vp the river being all full of men, who
 because the way was not passable were faine to cimbrike them selves to
 take the towne of Saint Augustine, which being wounse was at our de-
 parture burned to the ground.
L The towne of Saint Augustine where dwelled a hundred and fifty
 Spanish souldiers.
M The towne house.
N A lugh scaffold for a watchman.
O The Church.

P The lively portraicture of a fish called the Dolphin, which is of three
 severall colour: the top of his backe and all his fins be blue, all his sides
 are of light greene, the belly white, his head almost all blue, the taile one
 parte blue, and the lower parte greene, he is very pleasant to beholde in
 the sea by day light and in the night he seemeth to be of the colour
 of gold, he takeeth pleasure as other fishes do by swimming by the ship,
 he is excellent sweete to be eaten, this fish lueth most by chasing of the
 flying fish and other small fishes, they are caught most commonly by
 our mariners with harping irons or fishgi.



Saint Aug

- A The place where the whole Fleet came to anchor.
- B The place where the Pinnaces and Shipboots did set vs on shore.
- C A Beacon or high scaffold standing on the sand hills, wherein the Spaniards did use to discover shaps at sea.
- D The way which our army marched along the sand by the sea side towards their fort.
- E The place where our Pinnaces put our ordinaunce on land.
- F A lowe plaine or meadow ground through the which our troupes pulled to go towards the woods right ouer against the Spaniards forte.

G A wood growing hard by the river side, lying betwene it and the river side a high bancke of sande, in which wood our men encamped themselves, and in the said great bancke of sand, being fitted for the purpose was placed also two peeces of ordinaunce to beate the Spanish forte, which was done with such expedition as they were planted and discharged twice or thrise the same day we landed, meaning the next day to haue had more ordinaunce brought, and to haue it planted on the same side of the river wherein the fort is. whither Master Carleill our Lieutenant generall was minded the same night to transport him-

self & some part of the army, to lodge himself before the fort, but the Spaniards perceiving the approach before the day.
 H A Pinnace which the Spaniards had by the little river.
 I The fort which the Spaniards had made trees, they placed therein some fourteen peeces of artillery, which at our arrivall there to the said forte was called Saint Iohn de Pinos which