

COPYRIGHTED & PUBLISHED BY NORRIS, WELLS & CO. NO. 107 WELLS ST. MILWAUKEE, WIS. 1883

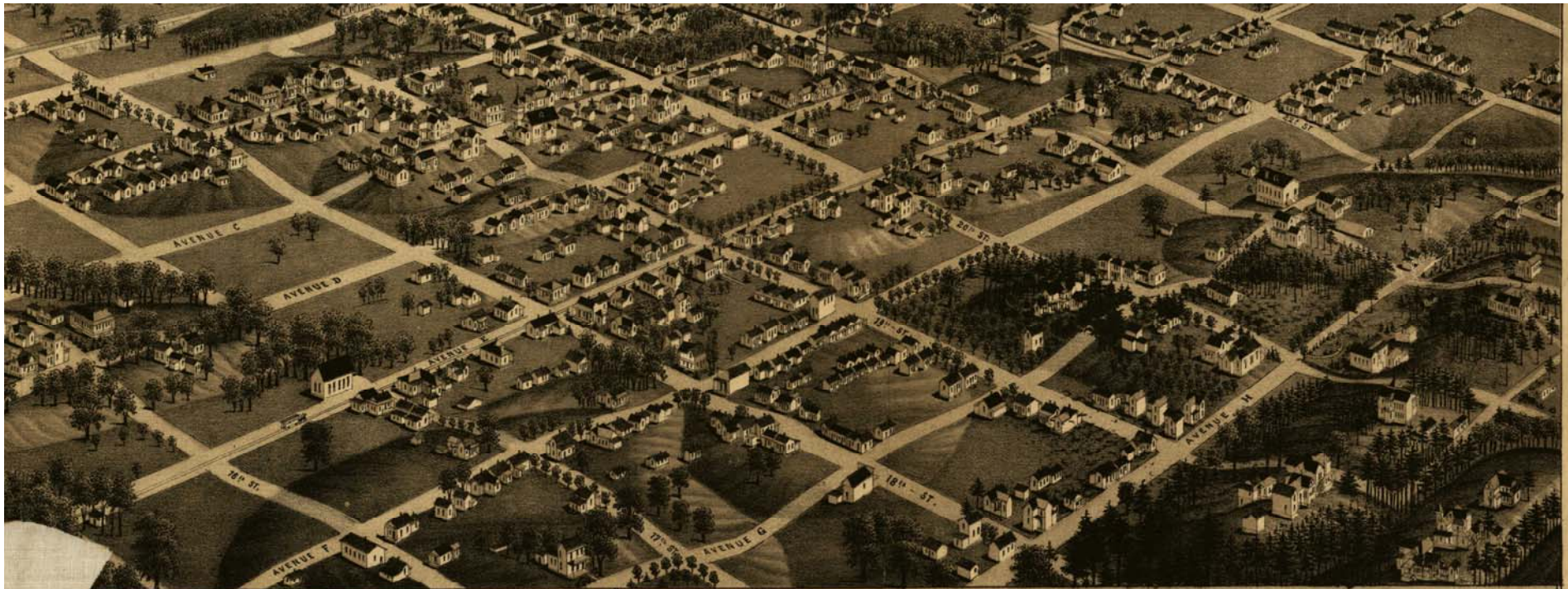
- 76-693074
- A Methodist Churches.
 - B Cumberland Presbyterian Churches.
 - C Catholic Churches and Convent.
 - D First Presbyterian Church.
 - E Episcopal Church.
 - F First Baptist Church.
 - G First Baptist Mission Chapel.
 - H Colored Baptist Chapel.
 - J Colored Churches.
 - 2 County Court House.
 - 3 Exposition Building.
 - 4 City Hall and Market House.
 - 5 Public Schools.
 - 6 Central Bank.
 - 7 Alabama State Bank.
 - 8 Jefferson County Savings Bank.
 - 9 First National Bank.
 - 10 Opera House. Frank P. O. Price.

- 11 Proposed Hotel and Union Depot.
- 12 Richards House.
- 13 Hewitt House, A. Enbank, Owner.
- 14 Florence House.
- 15 Sloss Furnace and Coke Ovens.
- 16 Mary Pratt Furnace.
- 17 Birmingham Fire Brick Works, Stevens and Fenton.
- 18 Georgia Pacific R. R. Round House and Shops.
- 19 Birmingham Iron Works, Wm Hardie, General Manager.
- 20 Birmingham Rolling Mill.
- 21 Alice Furnace and Coke Ovens.
- 22 Jefferson Foundry and Machine Shops, C. P. Williamson.
- 23 Iron City Foundry Machine Works, Aiken and Lighton.
- 24 Linn Iron Works.
- 25 Furniture Sash Door and Blind Mfg. W. P. Brewer.

- 26 Mineral City Mills, Braun, Schaefer and Behrens.
- 27 L. and N. R. K. Shops.
- 28 Cotton Factory.
- 29 Ice Factory.
- 30 Brick Works.
- 31 Planing Mills.
- 32 Wagon and Carriage factory, John W. Snow.
- 33 Skating Rink.
- 34 Soda and Mineral Water Mfg, C. B. Bell Snyder, Trustee.
- 35 Gas works.
- Moore, Moore and Handley, Hardware and Agt. Impiments, 20th St. and Morris Avenue.
- James A. Going, Real Estate and Lizard Ave. & 19th St.
- George C. Kelley, Hardware Miners Furnace and Mill Supplies, and Ave. between 19th and 20th St.
- Wilson and Ingram, Real Estate and Insurance, 21st St. between 1st and 2nd Avenue.

BIRMINGHAM
ALABAMA

Nabers and Morris, Druggists Wholesale and Retail, 1st Ave. between 19th and 20th St.
H. T. Heard, Physician and Surgeon
Garrett, Padian and Underwood, Attorneys at Law, First National Bank Building.
Boddie and Austin, Real Estate Dealers, 201 1/2 First Avenue.
John D. Strange, Attorney at Law, 1st Ave. Union Block
Ed. J. Sumer, attorney at Law, 1st Ave. Union Block



JEFFERSON FOUNDRY & MACHINE SHOP.



ELYTON LAND OFFICE.



LAKEVIEW PARK AND HIGHLAND AVENUE.

INGHAM

AMA.

Map Division
3 - MAR 1959
Library of Congress

Smith and Lowe, Attorney at Law, Over Alabama State Bank.
Mounjoy and Tomlinson, Attorney at Law Over Alabama State Bank.
John Tower's, Real Estate Dealer Over Alabama State Bank.
Dr. Smith and Sons, General Mdse., 111 20th St.
B. Coleman and Bro., Mfgs. and wholesale and retail Dealers in tobacco and cigars, 117 20th St.

H. C. Abbott, Watchmaker and Jeweler fine watch repairing a Specialty, 117 20th St.
P. Mudd, China Crockery and Glassware 1913 2nd Avenue.
Wallis and Bro. Wholesale and Retail Dealers Tobaccos Cigars and Smokers Articles, 2nd Ave. and 20th St.
T. B. Earle General Merchandise 1921 2nd Avenue.
Snow and Ramboe Saloon 116 20th St.
T. S. Smith General Merchandise 110 and 112 20th St.
Solomon and Levi, Wholesale Liquors and Cigars, 1st Avenue and 20th St.
Solomon and Levi, Bank Saloon and Restaurant, 1st Avenue and 20th St.
Bains and Herring Druggists Wholesale and Retail, 1926 1st Avenue.
L. H. Schmidt, Jeweler, 1924 1st Avenue.
J. R. Hochstetler, Wholesale Liquors, 1808 1st Ave.
W. S. Brown, General Merchandise, 1011 and 1013 2nd Avenue.

R. Knauff and Co., Dealers in Pumps, Furnace, Mill and Mining Supplies, Elyton Sand Co. building.
W. T. Johnson, Attorney at Law, 1924 1st Avenue.
I. Forst and Co., Wholesale and Retail Tobacco, Cigars and Smokers articles 1910 1st Avenue.
A. J. Monfee, saloon, 1904 1st Avenue.
B. G. Abernathy, Physician and Surgeon.
S. W. Emmons, Wholesale Fruits and Vegetables, 2124 2nd Avenue.
Slaton Mc. Glathe and Burwell, Wagons, Buggies, Fertilizers, 1st Ave. and 21st St.
George Raps and Co., Liquor Merchants, Opera House building.
T. C. Thompson and Co., Builders, 1910 1st Ave.
J. L. Watkins, Editor Daily News, 1910 1st Ave.
Connell Block.

E. C. Mackey, Staple and Fancy Groceries and Provisions, 2nd Ave. and 19th St.
L. A. Townley, Fruits, Confectionery, Cigars and Tobacco, 2nd Ave. near 19th St.
J. M. Dupuy, Groceries and Provisions, 2nd Ave. between 19th and 20th St.
D. Rowlett, Bakery and Restaurant, 2nd Ave. between 19th and 20th St.
E. Wall, Wholesale Fruits and Confectionery, 2nd Ave near 20th St.
George H. Rogers, Blank Book Mfgs. and Stationer 21st St. between 2nd and 3rd Avenues.
Peter Zmeser, Yarns, Pictures, Clocks etc, 21st St. between 2nd and 3rd Avenue.
Frank V. Egan, Daily and Weekly Chronicle, 1921 First Avenue.
George M. Gresham, Editors.
David B. Grace.

BECK & PAULI, Litho. Milwaukee, Wis.

G3974
B5A3
1885
W4