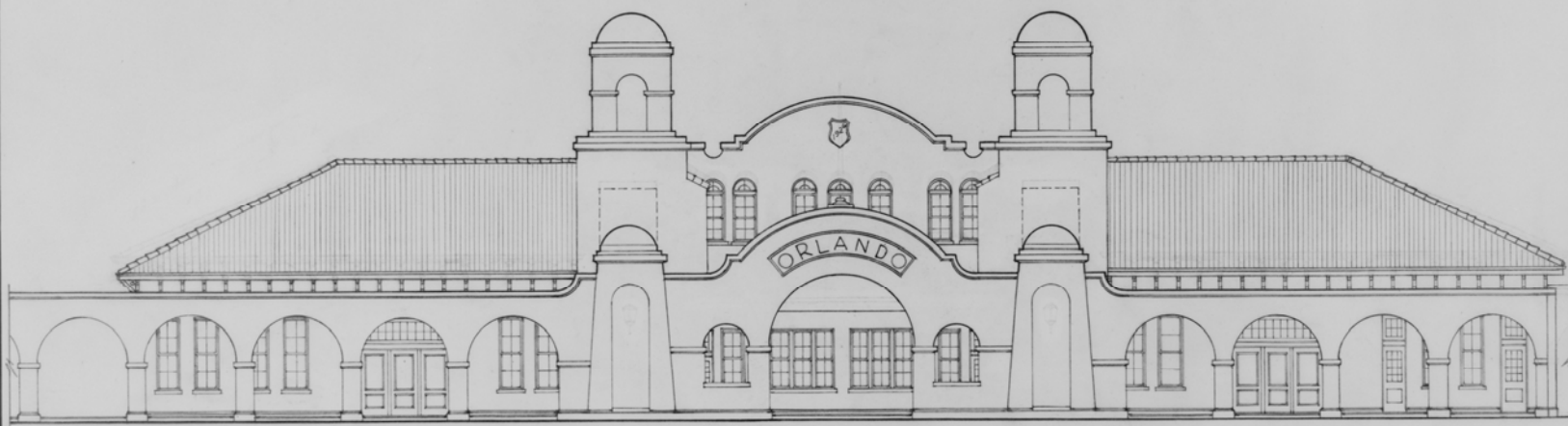


EAST ELEVATION
STREET SIDE



WEST ELEVATION
TRACK SIDE

0' 5' 10' 20'
SCALE 3/32"=1'-0"

DRAWN BY: JOHN PARKS

UNDER DIRECTION OF THE NATIONAL PARK SERVICE, UNITED STATES DEPARTMENT OF THE INTERIOR	NAME AND LOCATION OF STRUCTURE ORLANDO TRAIN STATION 1402 SLIGH BOULEVARD ORLANDO ORANGE COUNTY FLORIDA	SURVEY NO. FLA 260	HISTORIC AMERICAN BUILDINGS SURVEY SHEET 4 OF 6 SHEETS	LIBRARY OF CONGRESS PHOTODUPLICATION SERVICE
---	---	--------------------------	--	---

<http://loc.gov/item/fl0170/>

Library of Congress

www.loc.gov/teachers